

BETTER ENERGY PERSPECTIVE

CATALYZE COLLABORATE CONSENSUS
SUSTAINABLE ENERGY
SECURE CLEAN ENERGY COMMUNITIES
COMMON GROUND

ANNUAL REPORT



**GREAT PLAINS
INSTITUTE**

Better Energy.
Better World.

2013

BOARD OF DIRECTORS

John Baumgartner

Kathryn Draeger

Dawn Erlandson, *Immediate Past Chair*

Larry Goode, *Treasurer*

Will Kaul

Julie Ketchum, *Secretary*

Christopher Neher, *Vice Chair*

Rolf Nordstrom, *President & CEO*

Winthrop “Win” Rockwell

John Wells, *Chair*

Executive Advisory Council

(As of December, 2013)

Ronnie Brooks

Doug Cameron

Michael Conley

Jeff Heegaard

Richard Hudson

Margaret Anderson Kelliher

Jim Kubiak

Mary Hamann-Roland

Rod Sando

Doug Scott

Don Shelby

Jonathan Wilmshurst



Letter from the President & CEO

In the for-profit sector, measuring a company's success is straightforward: Is it profitable? Is it gaining market share? Is it producing returns for shareholders?

But measuring progress in the non-profit sector is more challenging since by definition our goals are not about making money, but rather tackling big, hairy complex social challenges. Say, for example, transforming the

way we produce, distribute and use energy to be both economically and environmentally sustainable. Yet, as human beings, we all want to know whether or not we are achieving our goals; and when we invest time or money to a cause we believe in we want some assurance that it is making a difference.

I am pleased to report that your support of the Great Plains Institute is making a huge difference. In the pages that follow you'll get a "snapshot" of our progress and projects over the past year. You'll see that we've stayed true to our vision and mission, working with a surprising variety of interests toward the goal of a clean, efficient and secure energy system.

This work quite simply wouldn't be possible without the generosity of our supporters. Thank you!

With your continued support we will together achieve our common vision of a world powered with clean, secure and sustainable energy.

Cheers,

Rolf Nordstrom
President & CEO



Dawn Erlandson GPI Board of Directors Member

Likening her affection for the Great Plains Institute to that of a parent, Dawn Erlandson is proud to be a part of the organization's tremendous growth and success in bringing diverse stakeholders together to solve the very real energy challenges facing all of us.

Dawn has been involved with GPI in different capacities since the inception of the Institute. She served as GPI's first Executive Director and then transitioned to a seat on the board of directors, serving as chair of the board from 2010-2012. Dawn will be leaving the board in 2014 to focus efforts on growing her 9-year old consulting business.

It has been a tremendous honor to serve on both the board and the staff of GPI. I have met so many incredible people over the years and I encourage readers to consider donating to the incredible work of GPI's staff, serving on the board or contributing in other ways, Erlandson says.

GPI is doing the most important work, in both its focus on energy and its collaborative, consensus-style.

Dawn is the founder and president of her own business - Aurora Strategic Advisors, a public affairs and communications consultancy. She has more than twenty years of sustainability, environmental, public affairs, communications, and executive experience, leading comprehensive public affairs and marketing communications efforts for many national, state and local clients.

A social entrepreneur, Dawn helped launch two non-profit organizations focused on sustainable development, including the Great Plains Institute. She also served as Market Mechanisms Coordinator for the President's Council on Sustainable Development under Bill Clinton and as a Legislative Assistant to U.S. Senator Donald W. Riegle (D-MI).

YOUR SUPPORT IS MAKING A DIFFERENCE!

Your continued support of the Great Plains Institute means that we're able to continue our work toward ensuring a clean and sustainable energy future. This summer, we announced the acquisition of two like-minded non-profit entities — the Metro Clean Energy Resource Team (Metro CERT), and Envision Minnesota (formerly 1000 Friends of MN). These two acquisitions have allowed us to combine our talents and networks, and will increase our impact at the community scale—which has become more important than ever given the political gridlock we too often see at higher levels of government.





Mike Conley GPI Executive Advisory Council Member

As a former Fortune 500 business executive and US Navy veteran, and now as founder of Weathering the Storm LLC, Mike Conley brings a well-rounded and insightful perspective to GPI's Executive Advisory Council.

Mike's "Weathering the Storm" project explores a futuristic look at major world challenges and how to cope.

Major economic, energy, environmental, geopolitical and behavioral forces are on a collision course but we are not responding. As we approach this perfect storm with only a vague notion of the significant paradigm shift it will cause in our lives, we are uneasy about the future, Conley says.

Mike also currently serves as Chairman and CEO of the Conley Family Foundation.

Mike's perspective as a businessman, futurist and problem solver is both unique and important to informing GPI's work, says GPI President & CEO Rolf Nordstrom.

Mike graduated from the University of Minnesota, after serving in the United States Navy, and later completed a post-graduate program at Stanford University.

Married with children and grandchildren, and author of the award winning book, Lethal Trajectories, he resides in Plymouth, Minnesota and serves on several boards.

An aerial photograph of a city landscape. In the foreground, a multi-lane highway with several lanes of traffic curves through the frame. To the right of the highway is a green grassy area with a small pond. In the background, a city skyline is visible under a blue sky with scattered clouds.

ON-THE-GROUND, COMMUNITY SCALE CLEAN ENERGY

In July, 2013, the Metro Clean Energy Resource Team moved to the Great Plains Institute, adding on-the-ground clean energy development to GPI's existing policy work. Since its inception in 2008, Metro CERT has been a successful catalyst for clean energy projects at the local level. The program is part of the larger CERTs partnership, which comprises 5 organizations that cover 7 regions in Minnesota. Recently, Metro CERT staff published 24 project case studies on "Local Government Energy Action," coordinated a GreenStep Cities workshop series, assisted Shakopee Public Utilities with launching a Smart Home pilot project, and funded 5 community-based clean energy projects through Seed Grants.

In addition to MetroCERT, 2013's acquisition of Envision Minnesota strengthens GPI's ability to make progress at the community scale. Envision Minnesota (formerly 1000 Friends of Minnesota) was a strong advocate for sustainable development and responsible growth management policy since it incorporated in 1998. The organization led several regional and statewide policy initiatives to promote better development across the state, including passage of the landmark Community-Based Planning Act. EnvisionMinnesota was attracted to GPI on the strength of its reputation and the growing GreenStep Cities program. The Great Plains Institute looks forward to continuing Envision's legacy by helping Minnesota cities achieve their energy and other sustainable development goals, largely through the GreenStep Cities program.

CATALYZING AND COMMERCIALIZING THE BIOECONOMY

GPI organized and launched the Bioeconomy Coalition of Minnesota, a multi-stakeholder partnership dedicated to creating a policy environment that supports commercial deployment of innovative advanced biofuel and biobased chemical technology in the state. The Coalition is a partnership between industry, agriculture, environmental community, and other stakeholders. The Coalition achieved its main policy objectives in the Minnesota 2013 legislative session, enabling greater market-penetration of next-gen biofuels and bio-based chemicals.

We also worked with the Midwestern Governors Association to convene a rare gathering of alternative fuel industries to promote a coordinated approach to developing refueling infrastructure. The “Diversifying Transportation Summit” brought together advocates and experts for various alternative fuel technologies – natural gas vehicles, electric vehicles, and biofuel vehicles – to identify effective ways to advance a multi-fuel approach to building out alternative fuel refueling stations in the Midwest.

Promoting broader use of biogas, an under-utilized renewable fuel that can be made from nearly any organic matter, was also a priority in 2013. GPI worked with industry groups, policymakers, and other stakeholders to promote better business models that can lead to broader biogas utilization. GPI is also partnering with project developers to promote specific projects to prove out new business models.

POLICY

PRODUCTION GROWTH
TECHNOLOGY INNOVATION
BIOMASS HEAT
MARKET DEVELOPMENT
BIOFUELS LEADERSHIP

**THE
COALITION**

RESOURCES

Biofuels Leadership

PRODUCTION OF ADVANCED AND CELLULOSIC BIOFUELS

The Coalition supports policies that bring innovative new biofuel technologies into production in Minnesota. Minnesota led the nation in creating a grain ethanol industry, and can lead the nation in creating an advanced and cellulosic biofuels industry. We support a new production incentive and revolving loan fund to achieve this goal.

BROADENING MINNESOTA'S BIOFUEL MANDATE

During the 2013 legislative session, the Bioeconomy Coalition worked closely with agriculture and biofuel advocates to expand Minnesota's ethanol mandate to be inclusive of a wider variety of advanced biofuels. This change passed the legislature.

INCREASING BIOFUEL USE

The new legislation passed in 2013 also includes a more aggressive biofuels goal for the state of 30% biofuel blending by 2025. The legislation created a taskforce to explore ways to the state to achieve its goals. The Coalition supports efforts to expand biofuel use in the state.

THE NEXTGEN ENERGY BOARD During the 2013 legislative session, the Coalition secured an increase in research and development funding for bio-based chemicals and next generation biofuels, enabling the NextGen Energy Board to make up to \$2.5 million in grants of up to \$500,000 each to support projects in this area.



FORGING GROUND-BREAKING AGREEMENT AMONG UTILITIES, REGULATORS AND ENVIRONMENTAL ORGANIZATIONS

GPI partnered with the Pace Energy & Climate Center (Pace Center) and World Resources Institute (WRI) to create, convene, facilitate, and provide technical assistance to the Midwestern Power Sector Collaborative, a group of public, private and nongovernmental stakeholders, who after nearly two years of debate and discussion have recently reached consensus on recommendations to EPA that spell out guiding principles and an optimal framework for implementing potential greenhouse gas regulations for existing power plants.

PLANNING THE ELECTRICITY TRANSMISSION GRID OF THE FUTURE

GPI was chosen to be one of a handful of Non-Governmental Organizations (NGOs) to formally serve on the “NGO Caucus” of a large DOE-sponsored effort called the Eastern Interconnect Planning Collaborative (EIPC). This transmission planning process will help determine transmission plans for the entire Eastern half of the U.S., covering 38 states and three Canadian provinces. GPI, along with its partners, is actively engaged in this national effort to determine the most cost effective regional transmission lines for supporting significant renewable energy expansion on the U.S. electric grid.

CHARTING A COURSE FOR MIDWESTERN INDUSTRIAL ENERGY EFFICIENCY

GPI led the Midwestern Governors Association’s Industrial Energy Productivity Initiative, aimed at improving the competitiveness of Midwestern industry. The goals of the initiative are to improve the effectiveness of Midwestern state industrial energy efficiency initiatives by developing and sharing information on effective policies and programs, financing, outreach and training; highlight the importance of industrial energy efficiency in state level economic development and promote state successes; and increasing the adoption of combined heat and power and waste energy recovery by sharing information about successful approaches, policies and technical assistance. GPI organized and facilitated the initiative’s meetings and authored reports on the status of Midwestern industrial energy efficiency and combined heat and power policies and programs, case studies of success stories, and state specific combined heat and power fact sheets.

DONORS & OTHER SOURCES OF SUPPORT

INDIVIDUAL

1,000 OR GREATER

Mitchell, Elsie
Heegaard, Jeff
Haas, Frederick
Anonymous
Baumgartner, John
Gonzalez, Bernard
Kubiak, Jim
Nordstrom, Rolf
Rockwell, Win
Goode, Larry
Kaul, Will

\$500 TO \$999

Schuerger, Matt
Lonn, Dana
Ohrstrom, Lysandra
Wilmshurst, Jonathan
Biewen, Amy and Paul
Niles, Mike

\$100 TO \$499

Rucker, Derek
Erlandson, Dawn
Fletcher, Sue & Wendell
Hofstad, Becky
Marcus, Alfred
Nordstrom, Harry
Wells, John
Schoessler, Rachelle
Gunderson, Amy
Schroeder, Marlyn
Draeger, Kathryn
Syverud, John & Mary

Schoenrich, Edyth
Schoenrich, Lola
Jordan, Charles
Schroeder, Clark
Perusse, Tom
Harbinson, Joe
Niles, Charles
Hammond, Ross
Heywood, Edrys
Anderson, Iver

UP TO \$99

Christianson, Kim
Dahlke, Jean & John
Bilek, Amanda
Schroeder, Eric
Nordley, Dan
Dahlke, Steve
Crafton, Jill & William
Harbinson, Harold
Heywood, Thomas
Davis, Joanie
Trezona, Peggy
Brooker, Charlotte
Lindquist, Mark
Morgan, Margaret & Stephen
Howard, John
Neher, Chris
Fredregill, Amy
Lundberg, Don & Marilyn
Grace, Sara
Burke, Mike

ORGANIZATION

100,000 OR GREATER

Joyce Foundation
McKnight Foundation
Energy Foundation

50,000 TO \$99,999

Argonne National Labs
RE-AMP
Edgerton Foundation

10,000 TO \$49,999

Midwestern Governors
Association
AGA
Great River Energy
Institute for International Educa-
tion
Jupiter Oxygen
M-RETS, Inc.
Segetis
Linde
Blandin Foundation
Leucadia

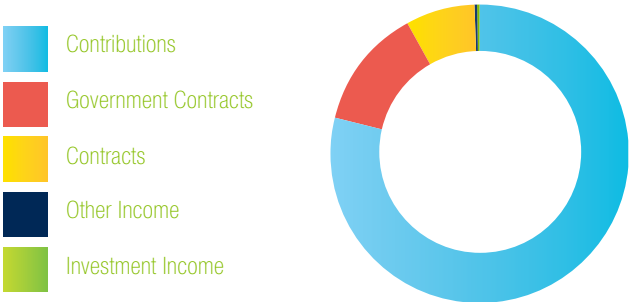
UP TO \$9,999

Waste Management
Xcel Energy
NRDC
Minnesota Department
of Commerce
Holthues Trust
Alstom
Energy Center of Wisconsin
Tellus
BioAmber
Natureworks
1000 Friend of Wisconsin
University of Wisconsin-
Madison
Leighty Foundation
Air Products
ValuPAC
Faegre Baker Daniels
Foundation
SynGas
Reluceo
University of North Dakota
Art Decor
Harbinson Consulting
McKenzie County
Stability Consulting
Braun Intertec
MELSA
Insight
igive.com
Meadow Lark Farm
George Washington
University

FINANCIAL STATEMENTS

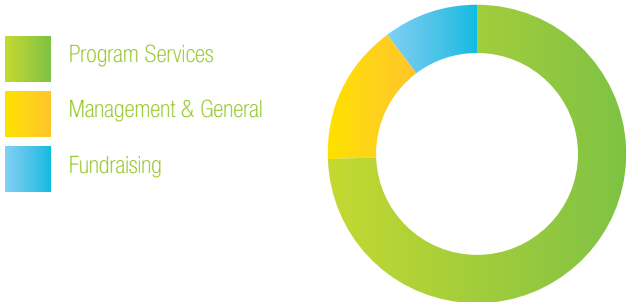
SUPPORT & REVENUE

TYPE	AMOUNT	PERCENTAGE
Contributions	\$1,130,323	78.93%
Government Contracts	\$187,856	13.12%
Contracts	\$106,626	7.44%
Other Income	\$5,597	0.39%
Investment Income	\$1,692	0.12%
Total Support & Revenue	\$1,432,094	100.00%



EXPENSES

TYPE	AMOUNT	PERCENTAGE
Program Services	\$1,181,638	74.56%
Management & General	\$243,770	15.38%
Fundraising	\$159,401	10.06%
Total Expenses	\$1,584,809	100.00%



Change in Net Assets **(\$152,715)**

OUR STAFF

AMANDA BILEK
Government Affairs Manager

AMIR NADAV
Program Manager

BRAD CRABTREE
Vice President

BRENDAN JORDAN
Vice President

DANE MCFARLANE
Senior Research Analyst

DIANA MCKEOWN
Metro CERT Director

ERIC SCHROEDER
Chief Administrative Officer

FRANZ LITZ
Program Consultant

JENNIFER CHRISTENSEN
Senior Associate

LOLA SCHOENRICH
Vice President

MIKE GREGERSON
Program Consultant

PATRICE LAHLUM
Program Consultant

ROLF NORDSTROM
President & CEO

STEVE DAHLKE
Policy Associate

TREVOR DRAKE
Project Coordinator



BETTER WORLD PERSPECTIVE

CATALYZE COLLABORATE CONSENSUS
SUSTAINABLE ENERGY
SECURE CLEAN ENERGY COMMUNITIES
COMMON GROUND

GREAT PLAINS INSTITUTE

2801 21st Ave S., Suite 220, Minneapolis MN, 55407

WWW.BETTERENERGY.ORG